



With more Exeter-Exmouth trains every Sunday how will you make the most of it?

+ Read about the improved train service

LOOK UP TRAIN TIMES

GET PDF TIMETABLE

Did you know...

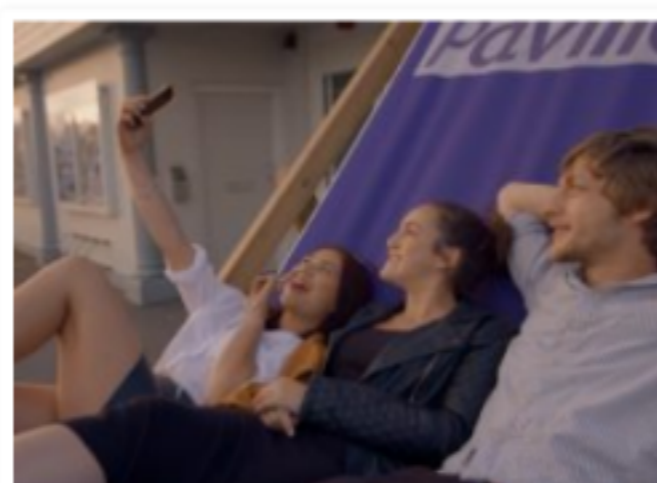
40%

of people say Sunday is the most boring day of the week. Let's prove them wrong!

SUNDAYS OUT BY TRAIN



Scrummy Sundays – great places for brunch on the Avocet Line



VIDEO: Enjoy a Sunday night out in Exmouth



VIDEO: Explore Topsham this Sunday



Five great Sunday roasts on the Avocet Line

Fares just **£5.00** Adult Off-Peak Day Return (Exeter-Exmouth)

WHERE DOES THE LINE GO?



● Half-hourly through most of the day

All the extra trains call at Exeter Central, Digby & Sowton, Newcourt, Topsham, Lympstone Village and Exmouth.

● Partially improved service

Polisloe Bridge gets extra morning trains to Exmouth and afternoon trains back. A number of the extra trains extend to Exeter St Davids.

○ Normal hourly service

St James' Park, Exton and Lympstone Commando have an hourly Sunday service, as previously.



RAIL TRAVEL ADVICE

Journey planning

- [Get train times](#)
- [Line timetables](#)
- [How to buy tickets](#)
- [Map of the network](#)
- [Door-to-door planner](#)
- [Station look-up](#)
- [Bus links](#)
- [Live departures & delays](#)

Travel tips

- [Bikes](#)
- [Dogs](#)
- [Prams](#)
- [Assisted travel](#)
- [Luggage](#)
- [Parking](#)
- [Toilets](#)
- [What is Off-Peak?](#)

Discounts

- [Season tickets](#)
- [Group discounts](#)
- [Children's fares](#)
- [Seniors](#)
- [Devon & Cornwall Railcard](#)
- [Ride Cornwall](#)
- [Devon Day/Evening Ranger](#)
- [Multi-day rover tickets](#)
- [Plusbus](#)
- [National railcards](#)

Problems

- [Lost property](#)
- [Phone contacts](#)
- [Compensation](#)
- [Making a complaint](#)

